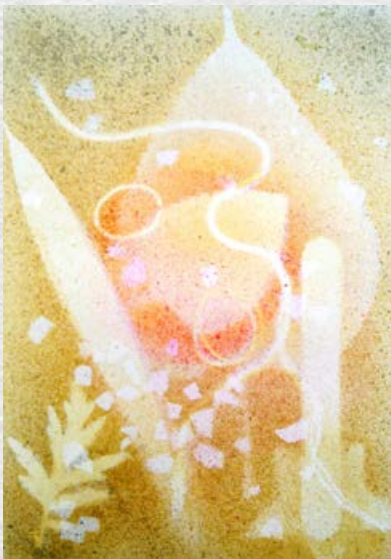




UOB Art Explorer

Art At Home



Tutorial 3 : Splatter Painting

Step-by-step guide to learn how to paint using toothbrush and DIY colour dyes

In partnership with UOB Painting of the Year winning artists





Materials/Tools: Crushed Eggshells, Leaves (Mulberry, Mint, Pandan and Mugwort), String, Rubber Bands, Star Shaped Paper, Ice Cream Stick, Soft Toothbrush, Plastic Ruler, Comb and A4 Paper

You may also use other materials as stencils.



Materials for making the natural dyes: Pandan Leaves, Red Onion, Beetroot, Blue Pea Flowers and Black Coffee Powder



Cut the pandan leaves into smaller pieces. In a blender, blend the pandan leaves with a little water. Sieve the blended pandan leaves to remove the residues from the green colour dye.



Cut the beetroot into smaller pieces. Simmer the cut beetroot in a pot of water till the water turns red (about 20 minutes). Repeat the same steps for both the red onion and the blue pea flowers.



Prevent the paper from moving by taping the sides. Scatter the crushed eggshells on the paper to form the first layer.



Place the string and rubber bands at your preferred position. The string may overlap the crushed eggshells to form the second layer.



Place the pandan leaf and ice cream stick on top of the crushed eggshells and the string to form the third layer.



Place the mint leaf in the centre and the mugwort leaf at the bottom left to form the fourth layer.



Place the mulberry leaf on top of the mint leaf and the star shaped paper at the bottom right to form the fifth layer.



Dip the toothbrush in the coffee dye. Brush the toothbrush against the edge of the plate to remove the excess dye.



Create a splattering paint effect by brushing the toothbrush against the teeth of the comb.



You may also use a plastic ruler to splatter the coffee dye.



Splatter across the paper until it is evenly covered with the coffee dye.



Remove the mulberry leaf and star shaped paper. Splatter the white areas with the red onion dye.



Remove the remaining leaves except for the pandan leaf. Splatter the white areas with the red onion dye.



Remove the pandan leaf and splatter the white area with the red onion dye.



Remove the string and the rubber bands to splatter the red onion dye on the white areas. By splattering in sections, it creates the dimensions of colour.



Remove the crushed eggshells. Dip the toothbrush in the beetroot dye. Splatter the dye in the centre of the artwork.



You may splatter the other dyes (blue pea flower and pandan leaves) at the top to beautify the work.

Three important tips:

- 1 A soft bristle toothbrush is easier to splatter the dye
- 2 Adding a teaspoon of white vinegar to the natural dye will help to preserve the colour
- 3 Fruit (e.g. blueberry and dragon fruit) can also be used to create the natural dye



Cheng Yen Pheng

**2019 UOB Painting of the Year (Malaysia)
Top Winner, Established Artist Category**

Ms Cheng is an artist and art teacher who graduated from the Dasein Academy of Art with a Diploma in Fine Arts in 2004. She has participated in many solo and group exhibitions held in Malaysia and internationally. In 2014, she was a finalist of the Bakat Muda Sezaman (Young Art Contemporary) competition organised by the National Art Gallery of Malaysia.

Her artworks depict her point of view on the current affairs and society, reflecting her approach and attitude towards her life.